



CARE
ESSENTIALS

Safe Mask Handling Instructions

Respirator Mask Fitting Models MSK-002 and MSK-002S

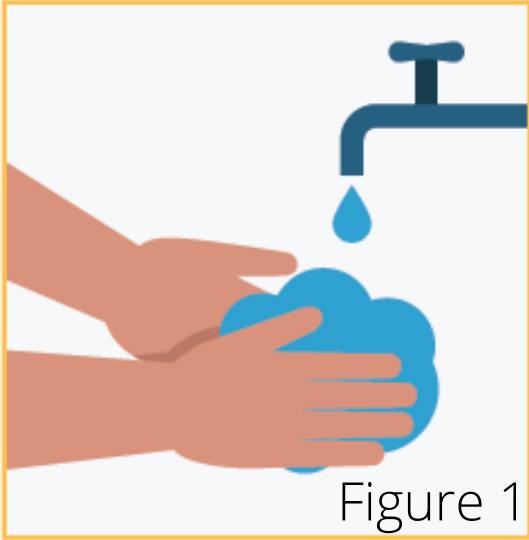


Figure 1

1. Wash Hands.

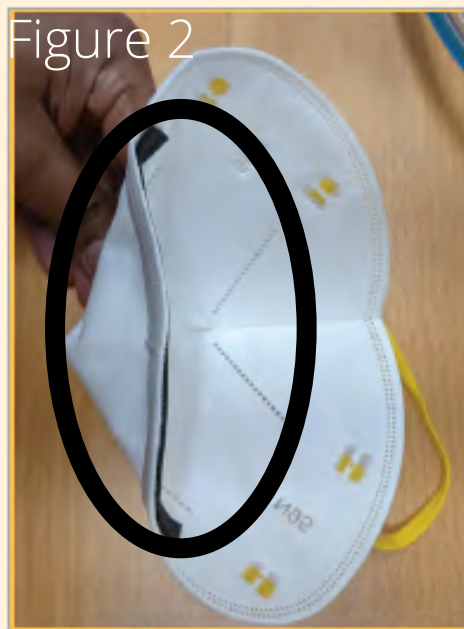


Figure 2

2. First flatten/straighten the nose wire on the mask as shown in the image below. This will allow nose wire to be better formed to your nose during fitting.



Figure 3



Figure 4

3. Next, position the mask as shown in the Figure 3 and wear the top head band as shown in the Figure 4.



Figure 5



Figure 6



Figure 7



Figure 8

4. Now, place two fingers on the bottom two welds as shown in the Figure 5 and 6. Next, pull the bottom head band over your head as shown in Figure 7 and finally resting the bottom head band over the neck as shown in Figure 8.



Figure 9

5. If there are any folds around the mask, straighten them using your fingers. If there is any hair stuck under the mask move them out of the mask as well.



Figure 10

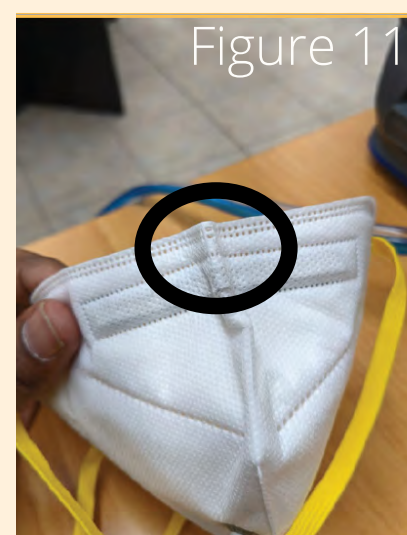


Figure 11

6. Make sure to position the nose wire of the mask at the top part of your nose. Do not position the nose wire around the pointy part of your nose as this would lead to potential failure of the fit. Use both hands and form the nose wire to fit it to your nose as shown in the image below. Press hard on the sides of your nose for the nose wire to give a better fit. Take care not to create a pointy V shape in the middle of the mask as shown in the figure 11 above. Next, check for a tight fit by placing both hands on the mask and checking for air leaks on your hand when you inhale or exhale.

